

MINING DEVELOPMENTS

MDM MARCH 2023

MAGAZINE



NYLOCOMP

CONVEYOR AND WEAR SOLUTIONS

Contact us Now

+27 (0) 13 932 1572

082 896 8739

nylocomp@nylocomp.co.za

or see our web page

www.nylocomp.co.za

Guide / Flexi Rollers



Linear Screen Gold

Viga-P® Idler



HDPE - Idlers



Sheet



Steel Idlers



SAVE ! SAVE ! SAVE !, Reduce Mine Operating Costs

**Install High Wear Resistance Idlers and Components,
Safe! Quiet! Cost Effective! Long Lasting!**

Some of our customers

RioTinto



BSF AUSTRALIA



Eskom



**ANGLO
AMERICAN**



**ANGLO
PLATINUM**

sasol
reaching new frontiers



We make



HERNIC
FERROCHROME

**Yiga P Idlers- Hear wear, high Impact, quiet operation Idlers
HDPE Idlers, UHMWPE Shute Liners, slurry pipe, Garland String Idler systems,
Guide and conveyor tracking units, Anti Rollback Idlers**

DE LEEUW
GROUP
QUANTITY SURVEYORS



Offices
Bloemfontein
Cape Town
Dubai
Durban
Johannesburg
Nigeria
Pietermaritzburg
Pretoria
Qatar
Rustenburg
Saudi Arabia
Stellenbosch
Windhoek

RECEIVED AN AWARD
FROM THE GREEN BUILDING COUNCIL



SCAN ME

www.deleeuwgroup.com

branding | gstudio.co.za

Miners trapped underground after pylons weakened by cable theft collapse, cutting power supply



Workers trapped at Sibanye mine

Sibanye Stillwater miners were trapped underground in Randfontein due to a power supply interruption caused by powerlines that collapsed after being weakened by the vandalism of cable thieves.

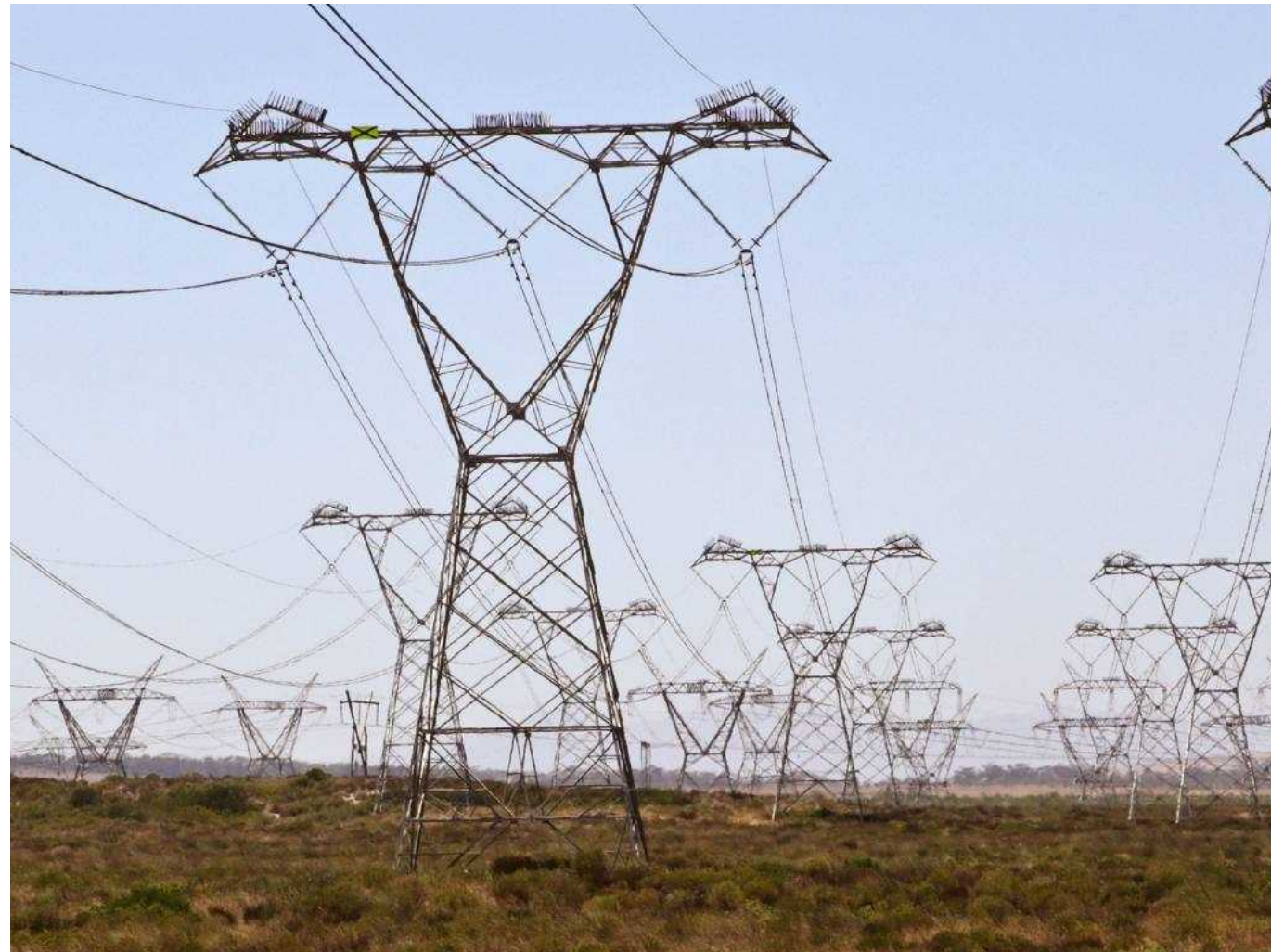
According to Eskom, the pylon structures were weakened by the theft of "tower members" and unstable ground caused by digging around their foundations.

Eskom spokesperson Amanda Qithi said the incident happened on Monday, and that they had dispatched a team of technicians to restore supply to the mine.

Qithi said a number of "132kV lines fell during the storm", compromising their "integrity".

"The pylon structures were weakened by the theft of the tower members and the unstable ground caused by digging around the foundation," she said.

Qithi added that the theft of tower members resulted in the instability and collapse of the pylons that carry high-voltage power lines, which posed a severe safety risk to members of the public.



Pylons connectivity

It had an additional devastating impact on the economy and on Eskom's ability to sustain the provision of electricity, she said.

Qithi said Eskom was spending a fortune on the replacement of stolen pylon parts and other network equipment.

She added that power had been restored to most of the shafts and that Eskom technicians were still working around the clock to restore power to a shaft in Kagiso.

Mashangu Xivambu, Eskom's maintenance and operations senior manager in Gauteng, said

vandalism and theft had extended to include pylons whose tower members were often stolen by "unscrupulous criminal elements", resulting in the steel structures collapsing.

"It is disturbing that this incident happens a week after we raised a concern about incidents of theft and vandalism of pylons," he added.

Xivambu also appealed to the members of the public to "partner" with Eskom by reporting illegal connections, theft, and vandalism of electricity infrastructure to the utility's crime.

KENYA'S OFFICE
WOOTA PUBLISHERS T/A MINING DEVELOPMENTS MAGAZINE
Tel: +254 70 155 2963 P.O.Box 178-20114, Kabazi, Nakuru, Kenya.

SOUTH AFRICA'S OFFICE
MOUNT EVEREST PUBLISHER (PTY) LTD T/A MINING DEVELOPMENTS MAGAZINE
Tel: +27 78 692 0826 Fax: +27 86 601 9195

Contributions
The editors welcome news items, press releases, articles and photographs relating to the Mining Industry. These will be considered and, if accepted, published. No responsibility will be accepted should contributions be lost, damaged or incorrectly printed.

© All rights reserved

The world's most complete range of mineral processing valves ...

Outstanding valve performance in abrasive, corrosive and scaling slurries.



INSAMCOR



RF VALVES



Saunders®



32 Lincoln Road, Industrial Sites, Benoni South
PO Box 5064, Benoni South 1502, Republic of South Africa.
Tel: +27 11 748-0200, Fax: +27 11 421-2749
E-mail: dfc@dfc.co.za, www.dfc.co.za

WearCheck training courses boost investment into condition monitoring

“For the best return on your money, pour your purse into your head.” These wise words were voiced by the founding father of the US – Benjamin Franklin – in the 18th century, little knowing they would still be highly relevant more than three hundred years later.

Condition monitoring specialist company, WearCheck, has witnessed, over several decades, many clients gaining enhanced return on their investment into the company’s condition monitoring programmes, when the maintenance staff ‘at the coalface’ undergo proper training. Steven Lumley, technical manager at WearCheck, oversees the ongoing development of the training schedule, which has been refined over the last 20+ years.

‘As the technology used in the wide range of our testing services is continuously being upgraded and enhanced to accommodate innovation, it is necessary for all players to learn about the

upgraded capabilities of the asset management techniques on a regular basis,’ she said.

‘It is for this reason that we highly recommend that maintenance personnel attend courses which are relevant to their area of operation, to ensure that their knowledge and understanding of the different condition monitoring technology is as advanced as the technology itself.

‘Our courses are aimed at staff operating at various levels within a company, from basic oil sampling techniques all the way up to CAT IV, and everything in between. Delegates can earn valuable CPD (continuing professional development) points when they complete many of WearCheck’s courses.’

These are some of the customer training courses run by WearCheck, and the duration:

Course	Days
• Precision Shaft Alignment	2, incl. practical
• Precision Balancing	2
• Vibration Analysis ISO CAT I	5, incl. exam
• Vibration Analysis ISO CAT II	5, incl. exam
• Vibration Analysis ISO CAT III	5, incl. exam
• Asset Reliability Practitioner - advocate (ARP-A)	3, incl. exam
• Asset Reliability Practitioner - engineer (ARP-E)	5, incl. exam
• Asset Reliability Practitioner - leader (ARP-L)	5, incl. exam
• Oil Analysis 1	2
• Oil Analysis 2	1
• WearCheck Customised	2
• Asset Reliability Practitioner (3 courses)	6 months

	Oil Analysis 1: Understanding oil and its analysis	CPD points	Oil Analysis 2: Report interpretation	CPD points
Course length:	<i>Two-day workshop</i>		<i>One-day workshop</i>	
Richards Bay	March 7,8	2	March 9	1
Springbok	March 14, 15	2	March 16	1
Middelburg	April 18,19	2	April 20	1
Kimberley	May 9,10	2	May 11	1
Steelpoort	May 16,17	2	May 18	1
Kathu	June 6,7	2	June 8	1
Cape Town	Jun2 20,21	2	June 22	1
Bloemfontein	July 18,19	2	July 20	1
Durban	August 15, 16	2	August 17	1
Rustenburg	August 22, 23	2	August 24	1
Johannesburg	September 12, 13	2	September 14	1
Kathu	October 17, 18	2	October 19	1
Nelspruit	November 14,15	2	November 16	1



WearCheck training consultant, Jan Backer (third from right, front row), conducted two-day training courses in Johannesburg recently.

Course	Wind Turbine Oil Analysis (two-day workshop):	CPD points
Cape Town	November 8,9	2

WearCheck offers other on-site courses on request:

* WearCheck Customised – oil analysis for workshop technicians (full day)
For more details on course content and prices, please view Training at www.wearcheck.co.za.

To book one of these courses, please contact Michelle van Dyk on training@wearcheck.co.za or call 082 381-3321.

Mobius courses at WearCheck
WearCheck has been an accredited training partner for the internationally acclaimed Mobius Institute since 2015. Mobius courses lead to accredited certification for asset reliability practitioners, condition monitoring specialists and precision maintenance technicians.

2023 WearCheck Mobius courses (classroom / online):

Course	CPD points	Mar	Apr	May	Jun	July	Aug	Sep	Oct	Nov	Dec
Vibration Analysis – CAT 1	4			15-19				11-15			
Vibration Analysis – CAT 2	5				05-09				09-13		
Vibration Analysis – CAT 3	5	13 - 17				10-14				13-17	
CAT IV											
Precision Balancing (2 days)	-		17 - 18				14-15				04-05
Precision alignment (3 days)	-		19-21				16-18				06-08

Pricing for Mobius courses is as follows (excl. VAT):

✦ Classroom Training

CAT1 – R15,706.17

CAT2 – R18,481.74

CAT3 – R22,592.65

Precision Alignment – R10,034.44

Precision Balancing – R10,034.44

✦ Online Training (Four Months)

CAT1 – R20,890.61

CAT2 – R24,258.81

CAT3 – R27,490.72

To book a Mobius course with WearCheck, contact Louis Peacock to book a spot: louis@wearcheckrs.com or +27 82 494 9461.

More details are available at <https://www.wearcheck.co.za/training/mobius-training.html>

All Mobius courses are presented at various venues throughout Africa. All courses can be presented online or on-site at a customer's premises for a minimum of seven delegates. For on-site training, there may be an additional charge for the lecturer's travel and accommodation.



Shesby Chabaya (centre, blue shirt) of WearCheck Zimbabwe conducted oil analysis training for a team from Masimba, Zimbabwe

Condition monitoring is
KEY to mining production

WearCheck, Africa's leading condition monitoring company, is committed to serving the mining industry with its range of sophisticated analytical techniques.

Our specialist oil, coolant and fuel testing programmes allow customers to reduce maintenance costs, avoid unexpected mechanical failures and ultimately reduce unscheduled downtime.

Unlock Machine Reliability!

Branches	
Botswana	+267 311 6829
DRC	+260 977 622 287
Ghana	+233 54 431 6512
Mozambique	+258 85 792 7933
Namibia	+264 81 141 7205
Uganda	+256 78 529 6994
Zambia	+260 212 210 161
Zimbabwe	+263 24 244 6369

South Africa (Head Office)
+ 27 31 700 5460 | support@wearcheck.co.za | www.wearcheck.co.za

Testing and Analysis | Lubricant-Enabled Reliability | Asset Reliability Care

Conveyor & Industrial
Supplies (PTY) LTD

Reg. No. 1982/011524/07

Tel: +27 11 306 3118
713 van Dyk Street, Boksburg East
info@cisjhb.co.za • www.cisjhb.co.za

Level 2 BEE Compliant

33 YEARS OF SERVICE
MANUFACTURING HIGH QUALITY CONVEYOR MECHANICALS
SINCE 1982 FOR ALL MINING AND INDUSTRIAL SECTORS.

GEARBOXES
Manufacturing & Repairs

CONVEYOR IDLERS
AND FRAMES

CONVEYOR PULLEYS
Manufacturing & Repairs

CONVEYOR BELTING

Industrial robotic solutions

LAND • AIR • WATER



WHY ACCESSIONAL?

- UTILISES STATE OF THE ART TECHNOLOGY
- ELIMINATES DANGER AND SAVES COSTS
- IMPORTS MACHINES FROM LEADING GLOBAL BRANDS
- CUSTOM, LOCALLY PRODUCED ROBOTIC EQUIPMENT AND SOFTWARE
- SERVICES MULTIPLE INDUSTRY SECTORS
- CUSTOM SOFTWARE DEVELOPED IN-HOUSE AND TAILORED TO CLIENT'S NEEDS, ENSURING JOB SPECIFIC DATA VISUALISATION AND REPORTING
- VIRTUAL REALITY SIMULATIONS ALSO AVAILABLE

ACCESSIONAL specialises in robotic solutions for confined and dangerous spaces and, in doing so, offer our clients the ability to remove employees from dangerous situations – placing them in safe and remote locations whilst performing high-risk tasks. As the official African agents for **Inuktun** and **Seamor Marine**, we offer products from some of the leaders in the field of robotics. We also run our own in-house engineering department with qualified roboticists, developing tailor-made robotic solutions to suit any client's needs.

ACCESSIONAL
CONFINED AND DANGEROUS SPACE SPECIALISTS

PLEASE CONTACT US TODAY FOR MORE INFORMATION

+27 [0]10 900 4073

www.accessential.co.za

www.ryonicrobotics.com



Zimbabwe's ban on lithium ore exports triggers stockpile buildup



Zimbabwe's ban on lithium ore exports has resulted in stockpiles of the key battery metal building up in the southern African country.

processing of the metal – has resulted in two-million tons of ore being stockpiled, according to Zimbabwe Miners Federation President Henrietta Rushwaya. Now the industry has asked President Emmerson Mnangagwa to review the ban as it threatens the viability of their operations.

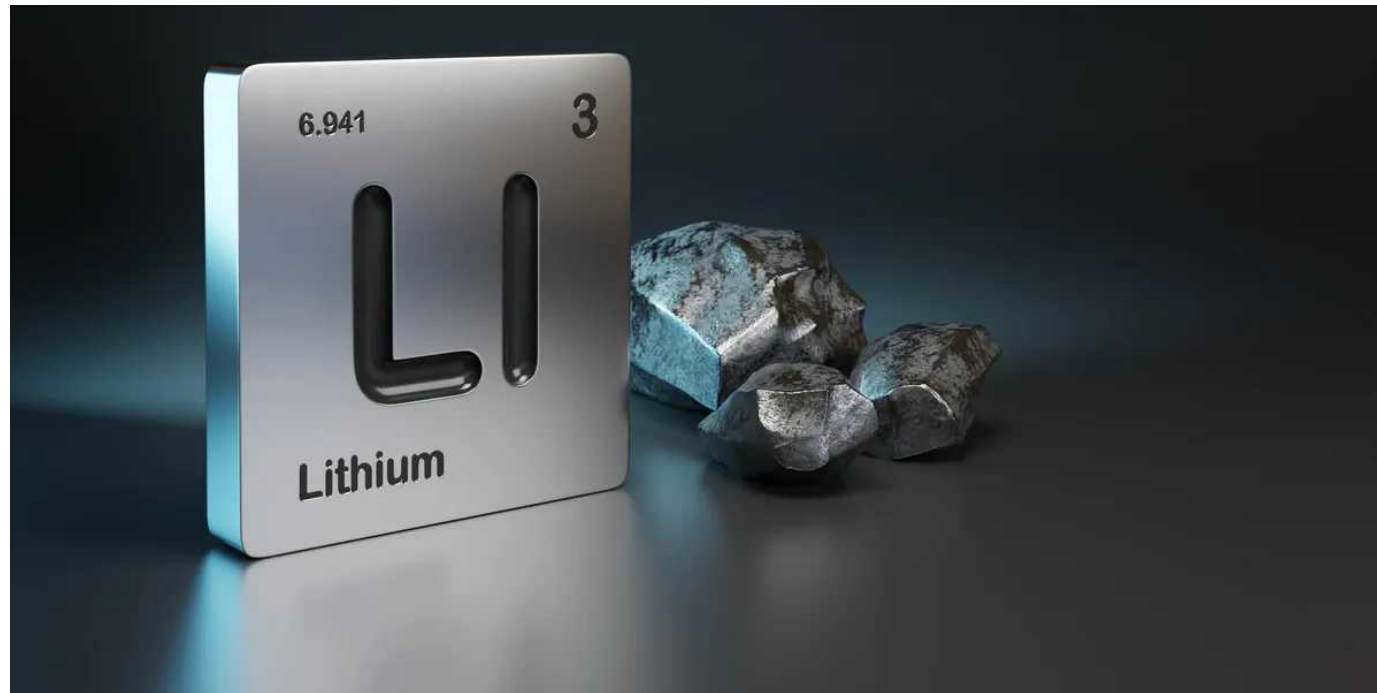
“The unexpected ban has prejudiced standing offtake agreements between miners and international buyers, some of whom had taken loans from their respective countries to trade in these minerals,” Rushwaya said in the letter to Mnangagwa.

The ban has impacted small- and medium-scale miners, but it's not clear how much lithium is contained in the stockpiled ore.



Zimbabwe Miners Federation President
Henrietta Rushwaya

The ban – introduced by the government last December in a bid to encourage local



Most of the lithium from Zimbabwe – which has one of Africa's largest resources of the metal – is usually shipped to China or South Africa, Rushwaya said by phone. Nations from the US to China are rushing to secure supplies of materials necessary for green-energy transition as the world turns away from fossil fuels.

Resource Group are exploring a joint venture to set up a battery metals processing plant in Zimbabwe, while Zhejiang Huayou Cobalt has invested \$300-million to develop a processing plant at its Arcadia lithium mine.

Chengxin Lithium Group and Sinomine

AS GREEN AS IT GETS

RECYCLED FOR YOUR FUTURE

- Excellent insulation values
- Certified lifetime guarantee
- Environment Friendly made from 80% recycled newsprint
- Non toxic and non-irritant
- Insect and rodent resistant
- Flat roof specialists
- 100% coverage
- Fire resistant

Recycled Product

Thermguard Insulation is manufactured from an incredible 80% recycled newsprint and thus is extremely environmentally friendly. A number of harmless household chemicals are added to make the product fire retardant and insect rodent resistant.

Double Green Effect

Thermguard is used in buildings to conserve energy, which ultimately slows the burning of fossil fuels that create greenhouse gases. Newsprint that would often be discarded on landfill sites to decompose and also emit greenhouse gases is recycled to create this eco-friendly product. This dual reduction in air pollution amounts to a "Double Green Effect".

THERM GUARD
CELLULOSE FIBRE INSULATION

HOLLEY HARVEYTILE, 29 WIGANTHORPE RD, WILLOWTON
TEL: 033-3940221 EMAIL: greg@holleyharveytile.co.za

Gold holds above \$1 900 as SVB collapse fuels hopes of Fed pause



Gold prices on Tuesday hovered near their highest levels in more than five weeks, and held above the key \$1 900 level, as expectations grew that the Federal Reserve could pause its rate hikes after the collapse of two big US regional banks.

Spot gold was down 0.1% at \$1 910.80/oz, as of 07:26 GMT, after rising more than 2% on Monday to hit its highest since February 3.

US gold futures also fell 0.1% to \$1 915.00.

"Safe-haven flows in the aftermath of the SVB's fallout, along with a pullback in hawkish rate expectations, have been supportive of gold prices' upside over the past few days," said Yeap Jun Rong, a market analyst at IG.

But some profit-taking might be triggered "as the risk environment attempts to stabilise," he added.

US officials have announced several measures to limit the fallout from the now-shuttered Silicon Valley Bank, the largest bank failure since the 2008 financial crisis, and restore investor confidence in the banking system. Regulators closed New York-based Signature Bank on Sunday.

Markets are now pricing in a 51.4% chance of the Fed holding rates in the current range of 4.5% to 4.75%.

Considered a hedge against economic

uncertainties, zero-yield gold also becomes a more attractive bet in a low interest rate environment.

"The short-term outlook for gold looks strong," analysts at ANZ said in a note, adding that the metal had jumped above its 50-day moving average, signalling a change in momentum.

"With investor allocation relatively low, we expect this to continue," they said.

The US consumer price index (CPI) report due at 12:30 GMT will be closely watched for cues on the Fed's rate-hike plan.

The dollar index was up 0.3%, making bullion more expensive for buyers holding other currencies.

Spot silver fell 0.1% to \$21.78/oz, platinum lost 0.5% at \$991.29 and palladium shed 0.7% at \$1 463.54.

sustainable & long term

WATER **STORAGE** SOLUTIONS

Pressed Steel Sectional Water Tanks

Prestank tank capacities range from **1 500 litres to 4.2 million litres** designed to SANS 10329:2004 guidelines and SANS structural codes. Our **Hot Dipped Galvanising** units are **easily transported** and **assembled** on even the most remote sites.



Specialists in the manufacturing of domestic and industrial water storage.

Structa Technology is a Level 1 BBBEE Contributor, and is part of the STRUCTA GROUP of Companies

MEYERTON | Tel: 016 362 9100

watertanks1@structatech.co.za | Director: Rodney Cory

rodney@structatech.co.za | 082 575 2275 | www.prestank.co.za

Manufactured in SOUTH AFRICA





MIXTEC

FOR MIXING TECHNOLOGY

Reg No. 1987/003637/23

59 Fleming Road

Meadowdale, Germiston

P.O. Box 8220, Edenglen 1613

Republic of South Africa

Phone: +27 11 974 7161

Fax: +27 11 974 7167

Email: info@mixtec.com

Website: www.mixtec.com

VAT No: 4100101429





Northam gets green light for RBPlats takeover, and slips despite flagging earnings surge

The company expects annual headline earnings per share to increase by as much as 72% per share on the back of a strong operational performance, higher rand metal prices and strong cost control.

But, it also said it may now proceed with an offer for Royal Bafokeng Platinum, after Impala Platinum withdrew a complaint against it

In light of a strong operational performance, which saw Northam produce 11.9% more in equivalent refined 4E metal (platinum, palladium, rhodium and gold) from its own operations, the group expects headline earning per share to increase by between 62.3% and 72.3% when it reports its annual results later

this month.

Sales revenue increased 45% to R20 billion, and operating profit jumped 55% to top R9 billion, Northam said.

The operating margin also increased to 45%, "demonstrating production cost discipline and efficiencies amid a high inflationary environment," the company said.

Notably, Northam's net debt to ebitda (earnings before interest, taxes, depreciation and amortisation) ratio of 0.62 times is "well within Northam's self-imposed target ratio of 1 to 1 in pursuance of the group's growth strategy", it said.





Northam said its strong balance sheet, liquidity position, and credit outlook had enabled it to pursue a possible business combination with Royal Bafokeng Platinum. Northam already held a near 35% stake in the business when, in November last year, it announced its firm intention to make an offer to all RBPlat shareholders to acquire the remaining ordinary shares in the company.

The offer consideration represents an amount of R172.70 per RBPlat share. Northam has committed R17 billion for the cash component of the deal. Northam said this had been fully funded through an appropriate bank guarantee and cash confirmation in favour of the Takeover

Regulation Panel (TRP).

Impala Platinum, a competing bidder for a majority stake in RBPlat, had submitted various complaints to the TRP last year regarding Northam's offer to shareholders, which had prevented the Northam Offer Circular from being posted.

"Northam hereby advises shareholders that Implats has summarily withdrawn [its complaints]," Northam said on Thursday. In light of this, "the TRP has advised Northam that it considers the announcement to be legally valid and that Northam may proceed with the offer."

CCG PLANT



**IT'S NOT A GAME...
BUT A COMPACT CEMENT GRINDING
PLANT WHICH MAKES YOU A WINNER**

The CCG is a small-scale grinding plant with Loesche's proven, state-of-the-art LM 24.2 CS vertical mill, designed to produce all types of cement. It is your winning business model for local cement production at the market.

For further information please contact
Udo Meyer
Tel: +27 (0)11 482 2933
Fax: +27 (0)11 482 2940
Email: umeyer@loeschesa.co.za
www.loesche.com



SAPIENSTONE

dress your kitchen

SURFACES
ACTIVETM
design for a better life

GREEN
FROM
FACTORY
TO
FIXTURE

SapienStone and ACTIVE technology are engineered and manufactured in the first **ZERO emissions** factory of its kind, offering architects, interior decorators and the public, the **opportunity to make more conscious decisions** when selecting materials. **ACTIVE SURFACES effectively contributes to a better quality of life**, in aesthetically pleasing and healthier environments.



Zero Emissions



Anti-viral



Anti-bacterial



Anti-odour



Anti-pollution



Self-cleaning





TURNMILL
 PROQUIP ENGINEERING (PTY) LTD

Tel: +27 (0)16 986 0030
 Fax: +27 (0)16 986 0127
 e-mail: rfq@turnmill.co.za
 www.turnmill.co.za

12 Fairbank Street NW7
 Vanderbijlpark, 1911
 PO Box 2092, Vereeniging, 1930

TURNMILL
 PROQUIP ENGINEERING (PTY) LTD

Turnmill is a level 1 BBBEE contributor

Turnmill is an ISO 9001:2015
 and an ISO 3834 Part 2 Certified
 Company
 Part of the STRUCTA GROUP of Companies

Fabrication and reconditioning specialists

- Pressure Vessels: Columns, Shell & Tube Heat, Exchangers and Drums
- Shop Fabricated Tanks
- Rotary Kilns and Processed Fired Equipment
- Materials Handling and Structural Components
- Rotable Unit Repairs and Refurbishment
- Mill Components and Spares
- CNC Turning
- Large 5 Axis CNC Milling (manually adjusted 6th Axis)



Shaft incident to hit Sibanye US production

An incident at Sibanye-Stillwater's US Platinum Group Metal operations is expected to shave up to 30 000 ounces off annual production, the group announced recently.

In a recent update to the market, Sibanye said an incident occurred at its Stillwater West mine in Montana during scheduled non-routine maintenance on the winder which services the vertical shaft accessing the deeper levels of the Stillwater West mine.

"This incident resulted in structural damage to the shaft headgear, winder house and winder rope," the company said, adding there were no

injuries to personnel and investigations into the causes of the incident are under way.

"The damage to the shaft infrastructure will require remediation, and access to the deeper levels of the mine will be impacted while remediation is under way," Sibanye said.

Access to the upper levels of the Stillwater West mine and the Stillwater East mine was unaffected and production from these areas, as well as from the East Boulder mine, will continue.

"Production from the Stillwater West mine



Airtec Systems Limited

We can offer comments/advice on how your building can affect the type of air conditioning system proposed.



Our Range Of Products

- Chillers
- Air handling units and fan coil units
- Direct expansion packaged units
- Mini split units, Outside air units
- Rooftop package units
- Precision control units

Telephone: +2341-3450559, 7744816, 4708588, 0802 223 8170 Fax: +2341-4963736
 Email: airtec@mwebafrica.com, airtec@hyperia.com Website: www.airtecng.com
 Abuja Address: 22 Djibouti Crescent, Wuse II, Abuja Postal: P.O.Box 5830, Ikeja,

AIRTEC
 SYSTEMS LIMITED
 Ventilation and Airconditioning



Sibanye-stillwater Thembelani

below 50 level will be suspended for approximately four weeks until the remediation is completed, resulting in approximately 25 000 2E [platinum and palladium] ounces to 30 000 2E ounces less production for the year."

Last year Sibanye produced 420 000 2E ounces from its US operations.

For the year ended in December, Sibanye reported a 44% decline in profit – from R33.8 billion in 2021 to R19 billion in 2022 – as a result of a three-month strike at its South African gold mines, a one-in-200-year flood at its Montana operations in the US, inflation and other macro-economic headwinds.

Sibanye said further guidance would be provided once shaft repair schedules are finalised, and production schedules have been fully optimised given the current shaft

constraints.

The company share price was up 5.76% to R40 at the closing trade on Monday. Sibanye's market value has declined 15% in the year to date.



SADCON

BUILDING AND MAINTENANCE

We are a construction company, established in 2009.

With 12 years of experience, we have worked on many different projects such as, The Cape Good Hope Castle, Chelsea on Main, University of the Western Cape Life Science building, 32 on Kloof, Obs Court, just to name a few.

We offer services such as plastering, painting, building constructions, housing constructions, ceiling and partitioning, as well as renovation and maintenance services.

office@sadcon.co.za
073 766 337 / 0606 522 513

- Bonding/Agents
- Chemical/Anchors
- Concrete Bonding
- Concrete Crack Repairs
- Concrete Release Agents
- Concrete Repair Mortars
- Curing Compounds
- Epoxy Adhesives
- Epoxy Grout
- Joint Sealants
- Non Shrink Grouts
- Pre Cast Repairs
- Water Proofing

CREATIVE CONCRETE SOLUTIONS

... WHEN QUALITY MATTERS!

A. SHAK
CONSTRUCTION CHEMICALS

Since 1958 we have been developing and producing world-class products for YOU
• Tel: + 27 11 822 2320
• Fax: + 27 11 822 2354
• e-mail: info@ashak.co.za



Office +27(0)11-795-4007
Cell +27(0)83-372-9802
even@iesciences.com
www.ies3d.co.za
www.initio.co.tz



WITH GREAT POWER COMES GREAT VERSATILITY



Building Construction (BIM)

Topcon's new GLS-2000 is equipped with ultra high speed scanning that provides time saving benefits without compromising accuracy. With a scan range of over 350 meters, a full-dome 360° x 270° field-of-view, and a simple one-touch operation, the GLS-2000 is a rugged and versatile tool that enables you to capture accurate 3D data in all your challenging work environments, across all your applications. The GLS-2000 is an industry-leading scanner that no serious practitioner should be without.

topcon-positioning.eu